

Types of vessels



Merchant vessels



liners and tramps.

merchant vessels



A liner sails according to a prearranged, fixed schedule.



***A tramp* does not have
a prearranged, fixed schedule**



merchant vessels




merchant vessels



A passenger ship has been *designed* to carry passengers, but some can also carry small amounts of cargo.



A large, dark silhouette of an offshore oil rig stands against a bright, hazy sunset sky. The sun is low on the horizon, creating a strong glow and casting long shadows. The rig's structure is complex, with a prominent upper section featuring a control room or observation deck. The overall scene is atmospheric and industrial.

Types of vessels and their silhouettes

Cargo vessels (freighters)



General cargo ship

- This *freighter* carries cargo in *bags*, *boxes*, *crates* or cargo coming in *pieces*.



Dry bulk carrier

**Dry bulk cargo (grain, ore, coal, etc.)
is *unpacked cargo of one commodity.***



Tankers.

- **Tankers carry liquids in bulk.**



VLCC

A Very Large Crude Carrier
carries enormous quantities of *crude oil*.



Semi-submersible heavy-load vessel



A semi-submersible heavy-load vessel is loaded by *submerging* it first.

When the vessel *emerges* again she will “pick up” the cargo.

Dockwise Shipping

video

Ore-Carrier



Ore-Bulk-Oil Carrier



LPG carrier

- **This tanker carries Liquefied Petroleum Gas.**



Liquefied Natural Gas



Container ship

- Containers are stowed in *rows* (abeam), *bays* (fore to aft) and *tiers* (layers).



Roll-on/Roll-off vessel



RAMP

Roll-on/Roll-off vessel



RAMP

Reefer



A refrigerated-cargo vessel (reefer) has been equipped with a refrigerating-plant to carry perishable cargoes.

Coaster

Coasters are small cargo vessels that carry cargo *along the coast* or on short *sea-voyages*.



Vessels with special functions



fishing vessels at sunset.

Tug

Large vessels are *towed* by sea-going tugs or harbour tugs.



A heavy-lift vessel can lift extremely heavy cargo with her *heavy derricks* (“booms”).



Heavy-lift vessel

Salvage vessel



A salvage vessel has been equipped with heavy derricks to lift wrecks from the seabed.

Dredger

Cutter suction dredgers are often *spudded* to keep the vessel in position.



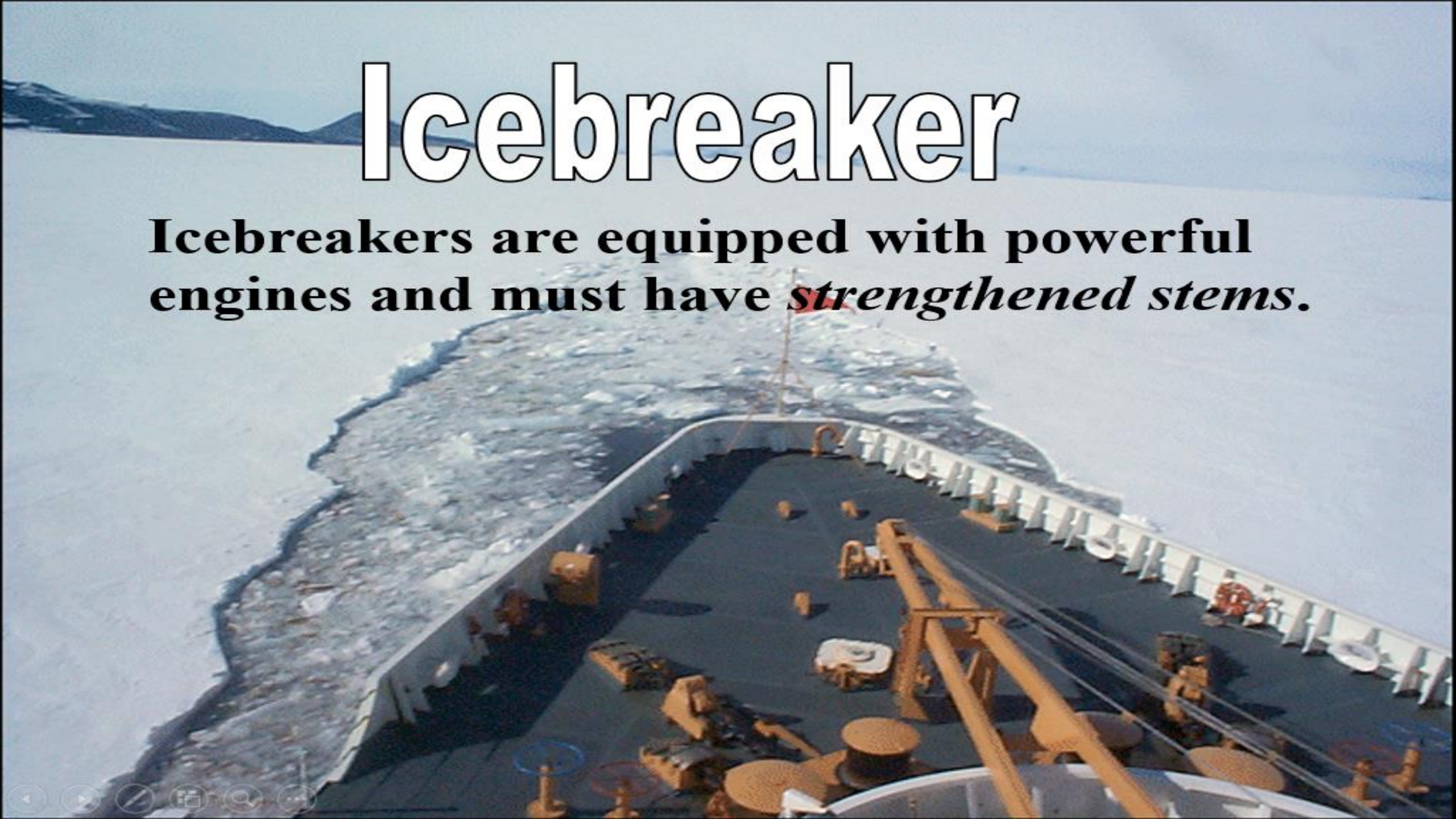
Supply vessel

- **The wheelhouse and funnel are forward.**
Supplies for oil rigs are carried on the aft deck.



Icebreaker

Icebreakers are equipped with powerful engines and must have *strengthened stems*.



Buoyage vessel

A buoyage vessel places and *maintains* buoys.



Pilot launch

Pilots often embark ships from *pilot launches*.



Fire float

A fire float is a *fire-fighting vessel*.



Survey vessel

A survey vessel performs *research* into nautical matters, such as *depths*, *seabed condition*, *positions of wrecks*, etc.



SAR-vessel

In cases of distress a SAR-vessel performs a Search and Rescue operation.



Man-of-war



Warships (Men-of-war) are *measured by weight*, unlike *merchant vessels*, which are measured by volume.